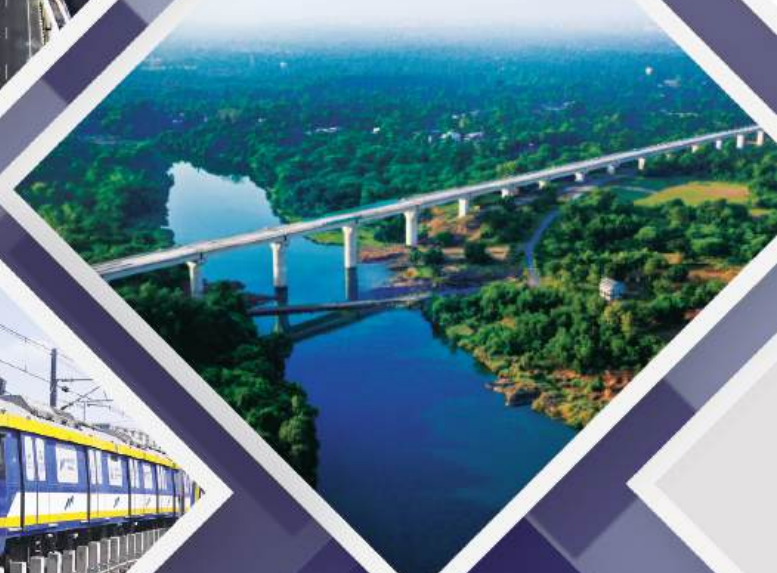
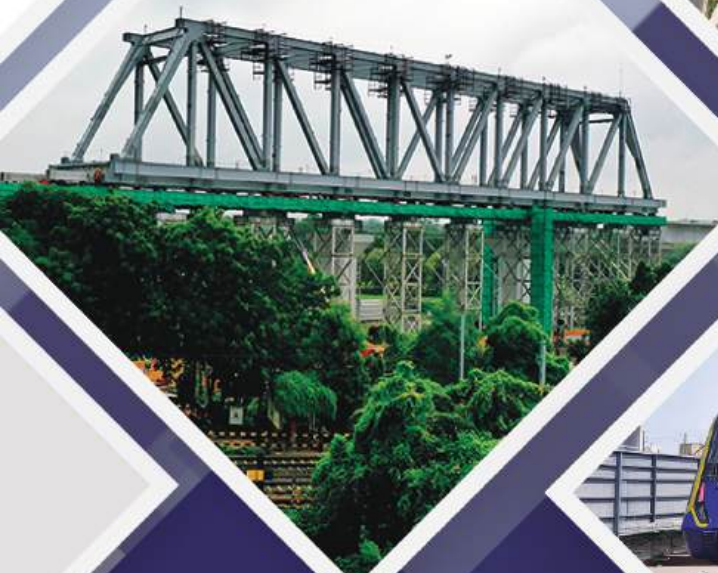




# ENGINEERING YOUR VISION







# TABLE OF CONTENT

What We Do	-----	1-2
CEG at a Glance	-----	3-12
Our Sectors	-----	13-58
Pathway Towards Progress	-----	59-70
Our Legacy in Visuals	-----	71-74





# What we do

**Consulting Engineers Group Limited (CEG)**, established in 1984, has been a pioneer in infrastructure consulting, engineering visions into reality for over 40 years. CEG supports public, private and institutional clients in implementing smart solutions for infrastructure projects for the entire lifecycle of the projects i.e. from concept and design through construction supervision and operation & maintenance. With a heritage of excellence of diverse sectors and resolute commitment to ethics and quality, CEG continues to shape the resilient infrastructure that promotes creation of social capital and sustainable future.

## Mission

**Serving communities through innovative and sustainable engineering**

Since inception, CEG has relentlessly pursued to deliver innovative and sustainable engineering solutions that empower communities, create value and foster a culture of excellence, integrity, continuous growth and building trusted client relationships.

## Vision

**Delivering engineering solutions with global standards and local insight**

We strive to deliver smart engineering solutions that blend global standards with local insight. This helps shaping resilient infrastructure for generations to come leaving a meaningful impact on communities and the built environment.



## Our Values

### Engineering Excellence

We commit to the highest standards of quality, safety, innovation and precision ensuring lasting value to every project.

### Ethics and Integrity

We uphold to highest standards of ethics, transparency and a strong sense of responsibility toward our clients, partners and society.

### Fostering Partnerships

We believe in the power of collaboration working closely with partners with mutual respect, shared commitment and the pursuit of excellence.

### Sustainable Engineering

We provide solutions with the future in mind promoting environmentally responsible and socially inclusive infrastructure.

### Empowerment & Shared Growth

We nurture an inclusive and diverse culture that values people, supports talent and builds the next generation of leaders.

### Commitment to Nation Building

We strive to contribute to infrastructure growth in every nation we work in that empowers communities across the country and beyond.





## CEG AT A GLANCE

- Our Sectors
- Our Expertise
- Global Presence
- Milestones



## OUR SECTORS



**Roads & Highways**



**Metro**



**Buildings**



**Water**

- Water Supply
- Sewerage
- Water Resources



**Railways**



**High Speed Rail**



**Governance**

- Institutional Strengthening
- Capacity Building
- Skill Development
- Policy & Procedure Formulation
- Vision & Strategy



**Digital Solutions**

- Building Information Management
- GIS
- Asset Management
- Intelligent Transport System
- SCADA



**Airports**



**Bridges**



**Tunnels**



**Urban Development**



**Environment**



**Geotechnical Investigation**



## OUR EXPERTISE

CEG provides a comprehensive range of professional services for all infrastructure projects throughout their lifecycles. We harness our unique combination of in-depth engineering solutions with advanced technology to provide clients with unique integrated offerings and added value. Leveraging our extensive experience and technical know-how to power local impact, quality and on time delivery remains the hallmark of our value proposition.



### Project Development

- Concept Design and Planning
- Master Planning
- Pre-Bid Services
- Techno-Economic and Financial Assessment
- Technical Due Diligence and Risk Analysis
- Quantity and Cost Estimations



### Design

- Pre-Feasibility and Feasibility Studies
- Preliminary Design
- Proof Checking and Design Review
- Design Validation
- Peer Review
- Value Engineering and Design Optimisation
- Geotechnical Investigation & Construction Material Testing
- Detailed Engineering Design
- Detailed Project Reports
- Construction Design Support



### Contract Management

- Bid Process Management
- Dispute Resolution
- Claim Management
- Contract Administration



### Project Management and Supervision

- Construction Management/Supervision
- Independent Engineer
- Authority's Engineer
- General Consultancy
- Project Management
- Third Party Inspections
- Program Management
- Quality Control / Quantity Audit
- Healthsafety & Environment Audit



### Advisory

- Transaction Advisory
- Capacity Development
- Institutional Strengthening
- Policy Planning
- Technical Assistance
- Lenders Engineer



### Technology Services

- BIM
- GIS and Mapping
- ITS
- Asset Management / RAMS



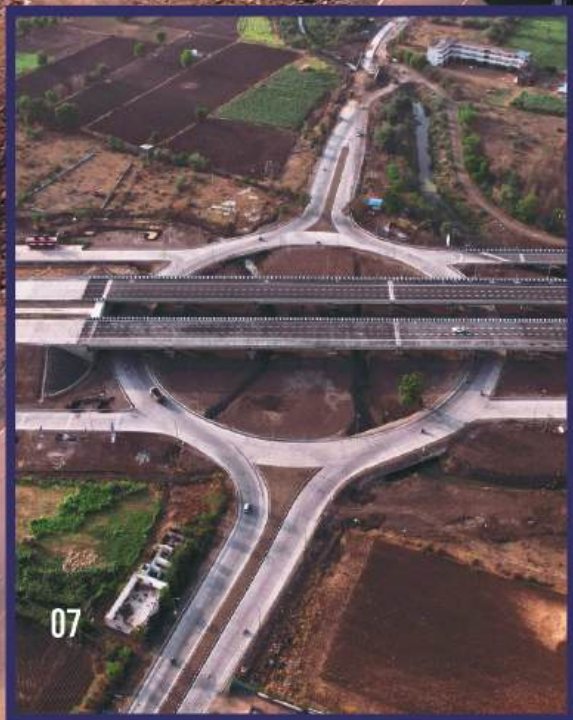
### Environment and Social

- Environment Impact Assessment and Monitoring
- Social Impact Assessment and Monitoring
- Rehabilitation and Resettlement Plans
- Climate Change and Resilience Advisory



### Operation and Maintenance

- O&M
- Routine & Periodic Maintenance
- Testing and Commissioning





# GLOBAL PRESENCE

CEG has cemented its reputation as a global leader in engineering consulting with an unwavering commitment to engineering and innovation operating from over 50 offices worldwide. Our footprints extend to impactful projects in emerging markets and developed nations alike reinforcing our role as trusted partners for delivering sustainable solutions for resilient infrastructure.

28+

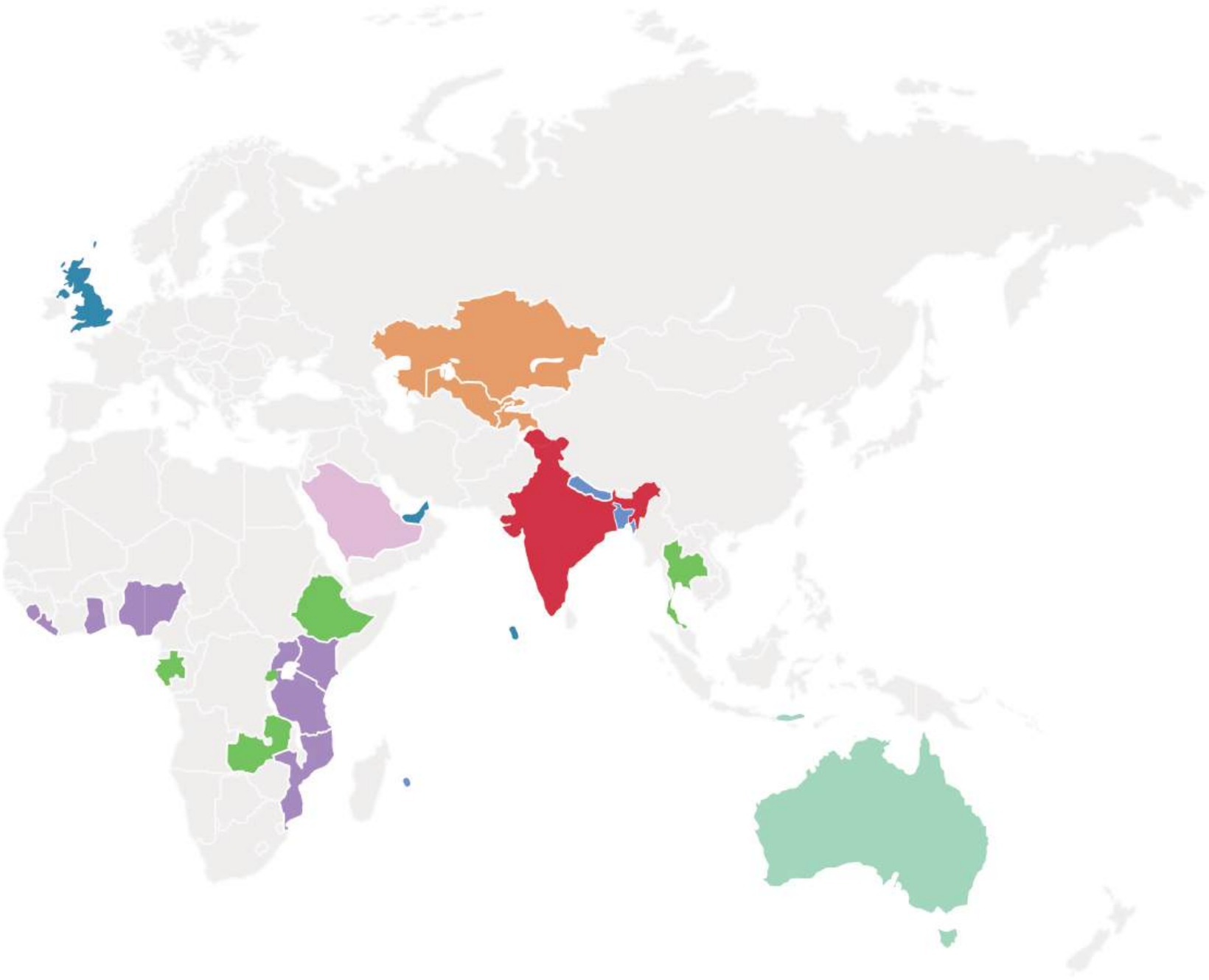
Countries

50+

Offices Worldwide

1600+

Professionals



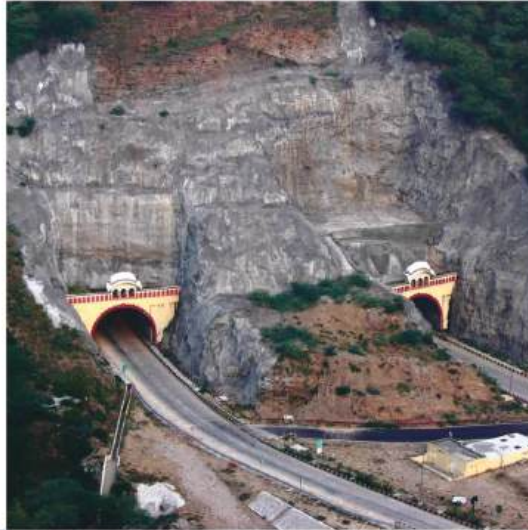


# MILESTONES

Transforming challenges into milestones, one step at a time.

90,000+

Road Asset  
Management  
Portfolio



50+km

Tunnels



1500+

Projects Handled  
to Date



200+

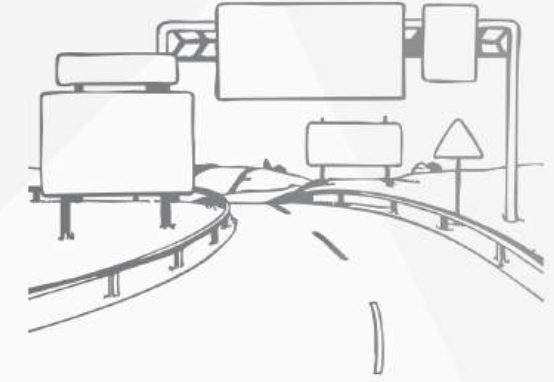
Station Buildings



Building  
Our  
Legacy

75,000+ lane km

Road Network



350+km

Metro  
Network

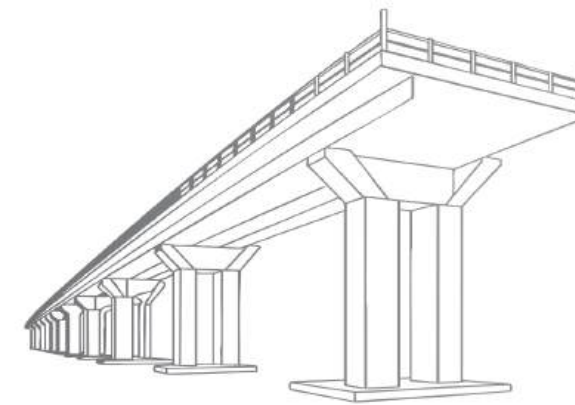
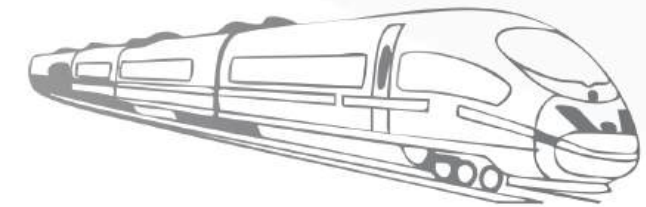


3,000+km

Rail  
Network

500+km

High  
Speed Rail



1,000+km

Bridges & Elevated  
Structures





## OUR SECTORS

### TRANSPORT

- Roads & Highways
- Metro
- High Speed Rail
- Railways
- Airports



## ROADS & HIGHWAYS

Highways are the main arteries of our modern-day society and remain the primary conduits for transporting lives and livelihoods. CEG's highway engineering teams are recognised industry leaders and are dedicated to ensuring this vital flow is maintained. With a portfolio spanning more than 75,000 lane km of road network globally, CEG has provided consultancy services for various road infrastructure encompassing rural roads, urban corridors, highways and expressways. CEG's expertise and global reach help deliver high-quality solutions for both public and private clients that pave the way for long lasting benefits to society.



## Projects

- 163 km Four Lane Jhansi Lakhnadon Highway, **India**, funded by **Asian Development Bank**
- 127 km Four Lane Patna Gaya Dobhi Highway, **India**, funded by **Japan International Cooperation Agency**
- 391 km Two Lane Road in Luapula Province under Output and Performance Based Contract (**OPRC**), **Zambia**, funded by **World Bank**
- 24 km Letefoho Gleno Road Section, **Timor Leste**, funded by **World Bank**
- 930 km Two Lane Highway under Rajasthan State Highway Development Program, **India**, funded by **World Bank**
- 6000 km of Road Network for Andhra Pradesh Rural Road Project, **India**, funded by **Asian Infrastructure Investment Bank**
- 114 km Six Lane Kishangarh Udaipur Ahmedabad Highway, Package 5, **India**
- 132 km Six/Eight Lane Nagpur Mumbai Samruddhi Corridor, **India**
- 390 km Four/Six Lane High Speed Expressway from Kharagpur to Tangi, **India**
- 458 km Four/Six Lane Gwalior Dewas Highway, **India**
- 240 km Four Lane Surat Dahisar Highway, **India**
- 244 km Four Lane Beawar Pali Pindwara Highway, **India**
- 555 km Six Lane Kishangarh Udaipur Ahmedabad Highway, **India**
- 4593 km of Rural Roads under PMGSY in Rajasthan, **India**, funded by **World Bank**
- 66,160 km of Core Rural Road Network in Rajasthan, **India**, funded by **World Bank**
- 96 km Four Lane Barclay Ville Klowne Sasstown Road, **Liberia**, funded by **Export-Import Bank of India**
- 345 km Addis-Jimma Expressway and 352 km Addis-Kombolicha Expressway, **Ethiopia**

## Services

- Construction Supervision
- Construction Supervision
- Construction Supervision
- Construction Supervision
- Project Management Consultancy
- Project Management Consultancy
- Independent Engineer
- Authority Engineer
- Design
- Feasibility Study
- Road Safety Audit
- Operation and Maintenance
- Traffic, Transportation Study and GDC
- Technical Examination
- Technical Assistance
- Design and Construction Supervision
- Design



## URBAN MASS TRANSIT SYSTEM

CEG delivers specialised consultancy services for urban rail transit systems, helping cities meet rising urban mobility demands. With over 350 kilometres of metro experience, CEG provides services for both civil works and rail systems. We provide advice on design, supervision, operations and maintenance and systems enhancements to ensure the metro system meets growing demand.

Building on that experience, our collaborative and multidisciplinary international teams are addressing evolving public transport needs and expectations through infrastructure projects and large-scale programs across the rail spectrum. Our integrated approach ensures that urban rail systems evolve to meet modern standards, enhance operational reliability and align with smart city ambitions.



### Projects

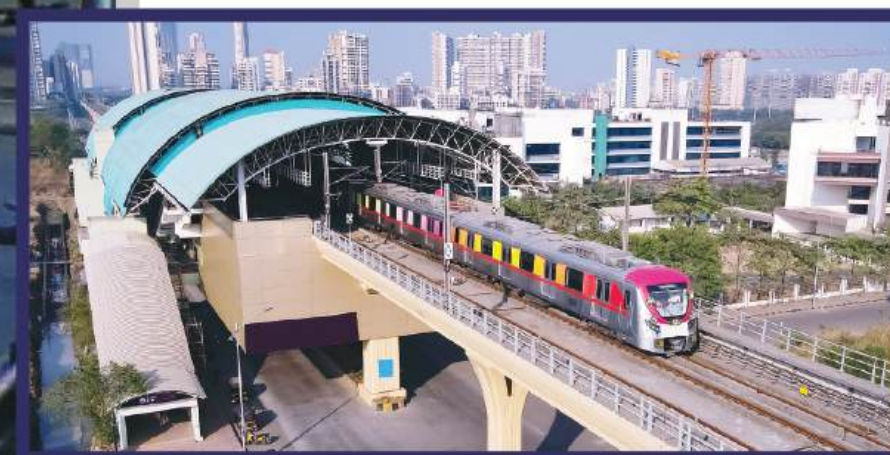
- 40 km Mumbai Metro Line 7 & Line 2B, **India**
- 27 km, Mumbai Metro, Line 5 & Line 9, **India**
- 38 km Nagpur Metro Phase I & II, **India**
- 33 km Pune Metro North-South and East-West Corridor, **India**
- 11 km Navi Mumbai Line I Metro, **India**
- 40 km Surat Metro Line I & II, **India**, funded by **French Development Agency (AFD) & German Development Bank (KfW)**
- 14 km, System Work Mumbai Metro Line 6, **India**
- 37 km RRTS from Delhi to Alwar, **India**
- 89 km RRTS from Delhi to Panipat, **India**
- 40 km Bangalore Monorail, **India**
- 37 km Indore and Bhopal Metro Phase I, **India**
- 45 km Chennai Metro Phase II, **India**
- 27 km Bangalore Metro Phase II A & II B, Section 2, **India**
- 9 km Automated Rail Transit System in Mumbai – POD Taxi, **India**

### Services

General Consultancy  
General Consultancy  
General Consultancy  
General Consultancy  
General Consultancy  
General Consultancy  
General Consultancy  
Design  
Feasibility Study  
Design  
Design Validation Engineering  
Design  
Design  
Project Management Consultancy

### Category

Metro  
Metro  
Metro  
Metro  
Metro  
Metro  
Metro  
RRTS  
RRTS  
Monorail  
Metro  
Metro  
Metro  
ARTS

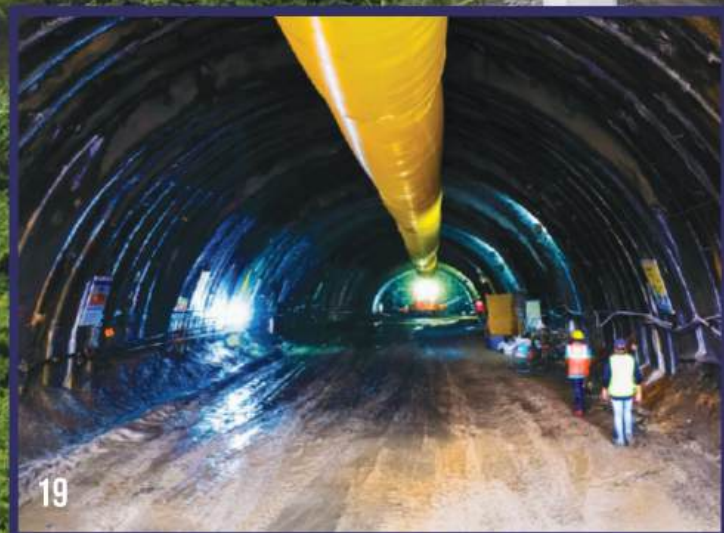




## HIGH SPEED RAIL

High-speed rail offers a fast, sustainable and reliable alternative to air travel connecting city centres more efficiently while reducing environmental impact. CEG has been a pioneer in the development of high-speed rail corridors in India and contributing to India's first prestigious high-speed rail project as a Project Management Consultant.

Our commitment is to advance high-speed rail infrastructure around the globe with cost-effective, rapidly deployable solutions and robust infrastructure designed for long-term reliability and ease of maintenance. Together with our clients, we work toward a common goal: delivering low-emission, high-capacity and resilient rail networks for the future.



### Projects

- Mumbai-Ahmedabad High Speed Rail (MAHSR), 508 km, **India**, funded by **Japan International Cooperation Agency**

### Services

Project Management  
Consultancy



UG Tunnel: 26 km  
Including 7 km  
Under Sea Tunnel



Elevated Length:  
469 km



Stations:  
12 Nos.



At grade: 13 km  
Access Controlled



Operating Speed:  
320 km/h



Design Speed:  
350 km/h



Depots:  
5 Nos.





## RAILWAYS

CEG's railway expertise helps clients navigate smooth and seamless connections between freight rail, heavy rail and port rail lines. With a proven track record of delivering more than 3000 km of railway infrastructure our capabilities span the entire life cycle of railways whether it's building a new rail line, doubling or quadrupling of lines, upgrading and rehabilitation of a network or improving the performance of the existing network.

Our extensive experience encompasses rail lines, bridges, stations & terminals, depots, earthworks, power supply transmission, signalling & telecommunications, rolling stock, utility diversion, 3<sup>rd</sup> rail line, gauge conversion, yard, etc.

## Projects

- 308 km Kampala Malaba Meter Gauge Railway Line, **Uganda**, funded by **African Development Bank**
- 95 km Dallirajhara Rowghat New Rail Link, **India**
- 70 km Gwalior Sheopurkalan Railway Line, **India**
- 66 km Rewa Siddhi New Railway Line, **India**
- 85 km Khulna Mongla Port Railway Line, **Bangladesh**, funded by **Export-Import Bank of India**
- 358 km Madar to Palanpur Dedicated Freight Corridor Railway Line, **India**
- 103 km Sirhind–Morinda–Nangal Dam Doubling of Railway Line, **India**
- 101 km of Quadrupling of Virar Dahanu and Double Line from Panvel to Kalwa Railway Line, **India**, funded by **World Bank**
- Infrastructure Facilities for 9000 HP Electric Locomotive Manufacturing at Dahod Workshop, **India**
- 180 km Wyndhamganj Ambikapur New Railway Line, **India**
- Second Tanzania Intermodal and Rail Development Project (TIRP-II), **Tanzania**, funded by **World Bank**

## Services

- Project Management Consultancy
- Project Management Consultancy
- Project Management Consultancy
- Construction Supervision
- Feasibility Study & Design
- Design
- Design
- Design
- Design
- Design
- Technical Advisory





## AIRPORTS

At CEG, we offer holistic airport consultancy services that combine technical expertise with sustainable design practices. From concept to construction, our expert team of specialists take a comprehensive, integrated approach to the development of new airports, as well as improvement projects for existing airports and expansion of taxiways and runways.

Our multidisciplinary approach boosts efficiency, elevates passenger experience and minimise environmental footprints. With future-ready design and attention to detail, we contribute to building robust air transport infrastructure that supports global connectivity and rapid air mobility evolution. We help clients deliver resilient, high-capacity airports that meet evolving regulatory, operational and passenger expectations ensuring long-term value.



### Projects

- Second Runway & Taxiway Expansion of U-Tapao International Airport in Pattaya **Thailand**, funded by **Asian Infrastructure Investment Bank**
- Pre Development Works for Navi Mumbai International Airport, **India**
- Runway Repair and Rehabilitation of Rajiv Gandhi International Airport, Hyderabad, **India**
- Jaipur Airport, Rajasthan, **India**
- Dholera Greenfield Airport, Ahmedabad, **India**

### Services

- Project Management Consultancy
- Independent Engineer
- Third Party Inspection
- Geotechnical Investigations
- Pre Bid Services



## OUR SECTORS

### STRUCTURES

- Bridges
- Tunnels



# BRIDGES

Bridges are not more than just a structures, they are the lifelines that connect communities, enhance mobility and support economic development. As a critical transport corridors, bridges play a vital role in shaping infrastructure networks. CEG integrates modern bridge technologies emphasizing durability, resilience and aesthetics to ensure long-term performance.

With a portfolio of more than 1000 km of elevated structures, we provide expert solutions for innovative bridges which include balanced cantilevers, steel truss systems, bowstring girders, etc. With in-house capabilities that span the entirety of each multi-faceted project, we actively leverage proficiencies across teams which, in turn, allows us to reduce risk and meet financial and sustainability objectives.

## Projects

- 10 km Four Lane Bangalore Hosur Elevated Highway, **India**
- 2.3 km Four Lane Balance Cantilever Bridge across Versova Creek, **India**
- 4.5 km Four Lane Elevated ROB on Nagpur Khamptee Highway, **India**
- 18 km Eight Lane Single Pier Elevated Dwarka Expressway, **India**
- 5 km Steel Truss Bridge, Khulna Mongla Port Rail Line, **Bangladesh**, funded by **Export-Import Bank of India**
- 27 km Elevated Metro Corridor for Bangalore Metro, **India**
- 1.3 km Elevated structure at Nathdwara under Gomati - Udaipur, NH8, **India**
- 8 km Elevated Corridor on Jamshedpur National Highway, 8,280 m Bridge Span, **India**
- 7 km Four Lane Bridge across River Kosi Birpur-Bihpur Highway, 6,930 m Bridge Span, **India**
- 14 km Elevated Highway between Bhiwandi Kalyan Shilphata, **India**
- 20 ROB's & 7 RUB's under Gati Shakti Unit, West Central Railway, **India**

## Services

- Independent Engineer
- Authority Engineer
- Authority Engineer
- Feasibility Studies and Authority Engineer
- Feasibility Studies and Design
- Design
- Design
- Design
- Design
- Design
- Construction Supervision





# TUNNELS

Tunnels play a vital role in enhancing connectivity, minimizing environmental impact and navigating space constraints. Also, they provides strategic solutions for various engineering challenges. These underground projects significantly contribute to the infrastructure that enables economic growth, environmental sustainability and societal well being. Drawing on the experience of over 50 km of tunnels of road, rail and metro, CEG partners with our clients to provide services for various tunnelling systems like NATM, TBM, cut and cover, etc., along with pioneering India's first underwater tunnel of MAHSR.

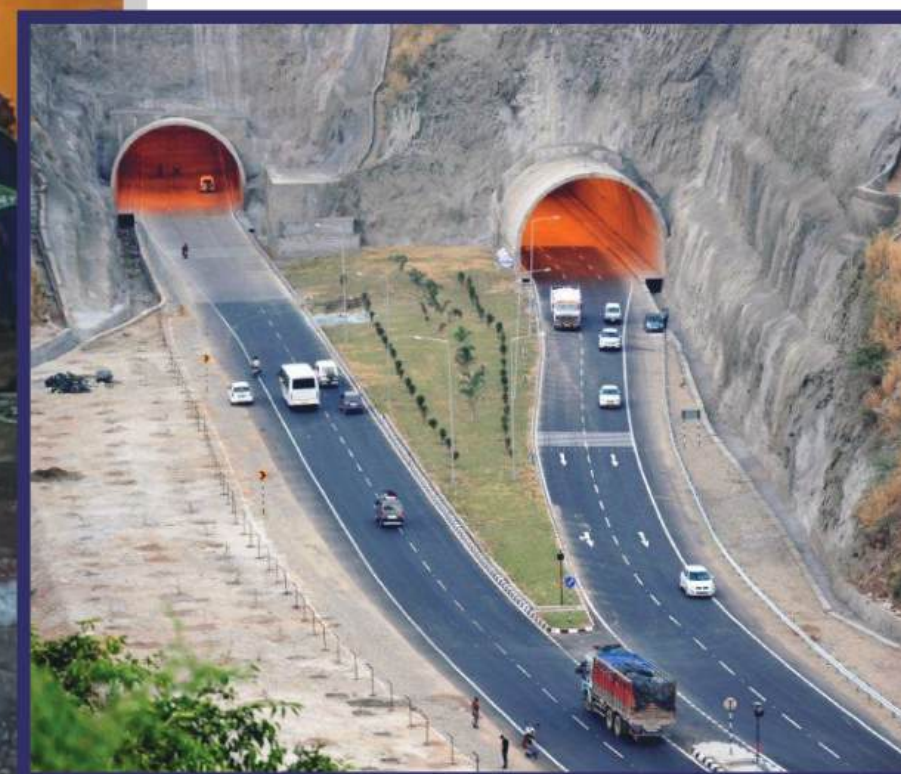
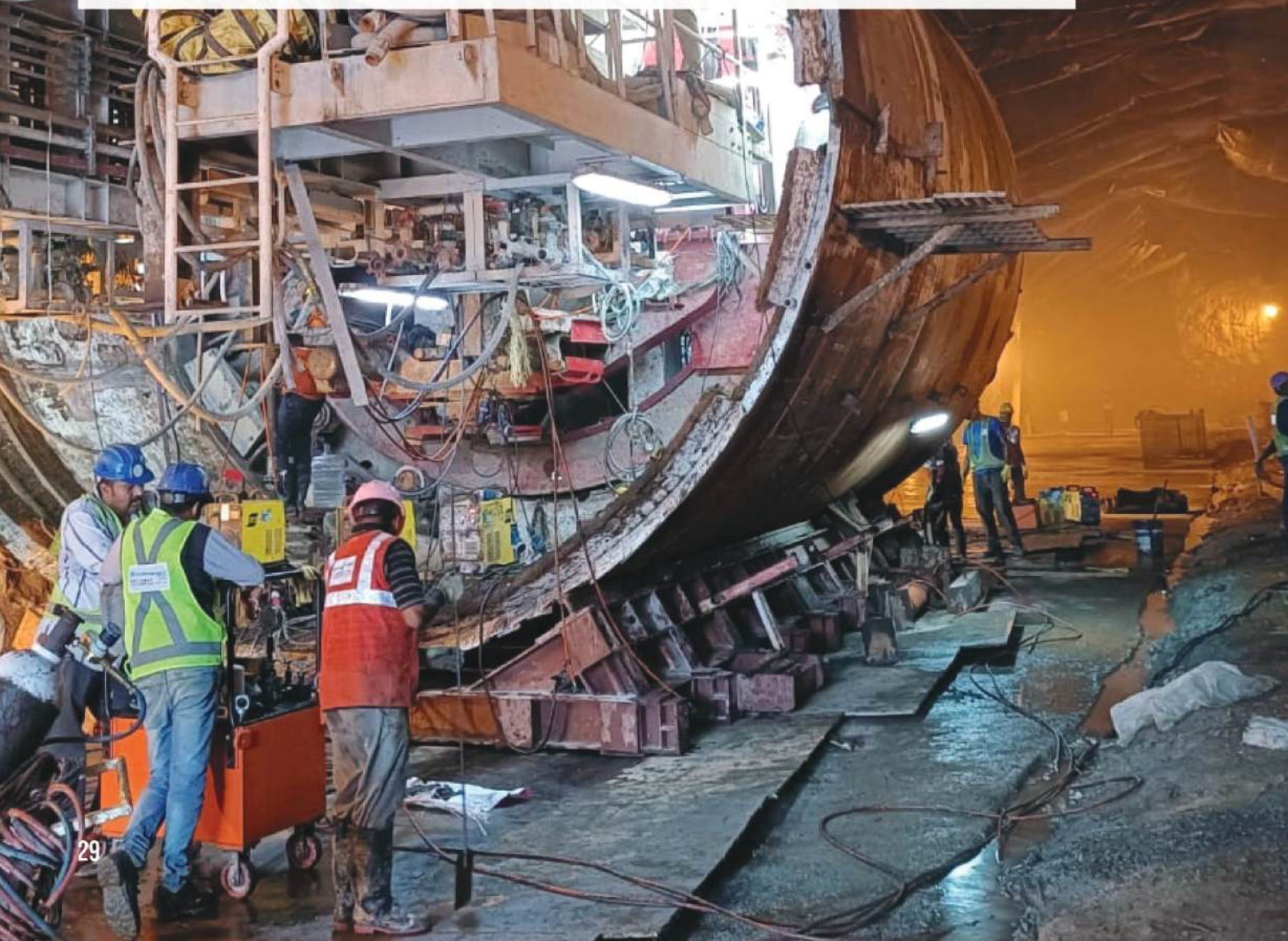
CEG contributes to tunnel projects by delivering integrated engineering, design and project management solutions that ensure safety, efficiency and sustainability throughout the tunnel lifecycle.

## Projects

- 26 km Undergroud Section including 7 km undersea Tunnel using TBM and NATM in Mumbai Ahmedabad High Speed Rail Project, **India**, funded by **Japan International Cooperation Agency**
- 16 Tunnels in SidhiSingrauli Rail line project, **India**
- 6.5 km Tunnel using TBM in Surat Metro, **India**, funded by **French Development Agency (AFD) & German Development Bank (KfW)**
- 6 km Tunnel using TBM in Pune Metro, **India**
- 2.3 km Tunnel using TBM in Mumbai Metro Line 9, **India**
- 1 km Twin Tube Four Lane Tunnel Deoli Jhalawar Highway, **India**
- 4.5 km Eight Lane and 3 km Four Lane Twin Box Tunnel, Dwarka Expressway, **India**
- 12 km Tunnel in Bhopal and Indore Metro, **India**
- 22 km Twin Tube Tunnel using TBM in Chennai Metro, **India**

## Services

- Project Mangement Consultancy
- Project Mangement Consultancy
- General Consultancy
- General Consultancy
- General Consultancy
- Feasibility Study
- Feasibility Study
- Design
- Design





## OUR SECTORS

### URBAN DEVELOPMENT



## URBAN DEVELOPMENT

As cities and urban areas face the growing challenges of urban mobility, clean water, proper sanitation, and climate change, our team of experts at CEG brings together insights to design and supervise an inclusive, resilient, and sustainable urban area. From megacities to emerging urban centres, we collaborate to shape communities that enhance opportunity, well-being and social & economic indicators. Our multidisciplinary team offers strategic consultancy services which include techno-economic studies, architecture, master planning, supervision, advisory and digital solutions to improve access to safe public spaces and build cities that are both safe and future-ready.

### Projects

- Urban Infrastructure Development in Iringa Municipality, **Tanzania**, funded by **World Bank**
- Urban Infrastructure Development for Dodoma City, **Tanzania**, funded by **World Bank**
- Urban Development of 22 cities under Rajasthan Urban Infrastructure Development Project (RUIDP) Phase IV, **India**, funded by **Asian Development Bank**
- Ajmer Smart City Project, **India**
- River Beautification of Fatula Lake in Nagpur, **India**
- Urban Development of 29 Cities under AMRUT Project in Rajasthan, **India**
- Urban Colonies at Brisbane City Council, **Australia**

### Services

- Construction Supervision
- Construction Supervision
- Contract Management and Construction Supervision
- Project Management Consultancy
- Project Management Consultancy
- Project Management Consultancy
- Design





## BUILDINGS

From residential complexes to townships, station terminals, etc. CEG delivers smart and sustainable building infrastructure solutions. We provide comprehensive support through architectural and structural design, project management and construction supervision ensuring optimal resource use and project efficiency. Our designs focus on functionality, energy efficiency and long term sustainability while maintaining aesthetic integrity. We adapt to evolving user requirements and safety standards, crafting high performing spaces that are future proof and environmentally responsible. Our approach enables clients to build better, smarter and more resilient environments that balance design innovation with practicality.



## Projects

- 22 Floor Staff Quarter Buildings and 13 Elevated Station Buildings in Mumbai Metro Line 6, [India](#)
- 32 Elevated Station Buildings in Mumbai Metro Line 7 and 2B, [India](#)
- 32 Elevated and 6 UG Station Buildings for Surat Metro, [India](#)
- 26,300 sq m. Siddha Aashray and Siddha Aangan Group Housing Projects Jaipur, [India](#)
- 21,000 sq m. Global Eco City Mega Township Greater Bhiwadi, [India](#)
- 240 Hectares the Future City Mega Township Project in Jaipur, [India](#)
- Redevelopment of Gwalior Railway Station Building, [India](#)
- Redevelopment of Jalandhar Cantt Railway Station Building, [India](#)
- Redevelopment of Ludhiana Railway Station including 130 Staff Quarters, Hospital, Multi-Level Parking, Concourse, [India](#)
- Redevelopment of Khajuraho Railway Station, [India](#)
- Development of Vande Bharat Train maintenance workshop depot and Logistics Park at Itayakalan, Redevelopment of Bina Railway Station, [India](#)
- 42 Storied Staff Quarter Building and Multilevel Robotic Car Parking Building, Mumbai
- Workshop Building for 9000 HP Electric Locomotive Plant in Dahod, [India](#)
- Development of electric Locomotive - HHP Diesel Shed Raipur & Diesel Loco Shed (DLS) Raipur, [India](#)



## Services

- General Consultancy
- General Consultancy
- General Consultancy
- Architecture, Design and Construction Supervision
- Architecture, Design and Construction Supervision
- Architecture, Design and Construction Supervision
- Project Management Consultancy
- Project Management Consultancy
- Project Management Consultancy
- Project Management Consultancy
- Project Management Consultancy
- Project Management Consultancy
- Design
- Detailed Project Report



## OUR SECTORS

### WATER

- Water Supply
- Sewerage
- Water Resources





## WATER

Water Balancing the world's need for safe, reliable water with protecting this critical natural resource for the future requires a deep understanding of interconnected systems. CEG offers comprehensive consultancy services by providing end-to-end solutions in water supply, waste water management, sanitation, sewage, water resources and network planning.

Our services embrace the tasks implicit in planning, design in all its phases, construction supervision and operation and maintenance controls. Through a blend of technical precision and social insight, we engineer resilient water solutions that support both environmental, health and human development. We understand the water challenges and develop solutions that contribute to the protection of water resources, their efficient use and sustainable development.

### Projects

- Urban Water Supply, Sewerage, and Drainage for 22 cities under RUIDP Phase IV, **India**, funded by **Asian Development Bank**
- Rajasthan Water Sector Livelihood Improvement Project, **India**, funded by **Japan International Cooperation Agency**
- Urban Water Supply and Sewerage for 29 Cities under AMRUT Project in Rajasthan, **India**
- Network planning of water courses and field channel for distribution system of Bisalpur Project, **India**
- Design and Analysis of Water Supply Distribution network for Alwar City, Rajasthan, **India**
- Structural design of pumping station Jodhpur lift canal at Bap & Phalodi, Rajasthan, **India**
- Water Supply at Coal-Based Supercritical Thermal Power Plant, Chhabra, Rajasthan, **India**

### Services

- Contract Management & Supervision Consultancy
- Project Management Consultancy
- Project Management Consultancy
- Planning and Design
- Design
- Design
- Design





## OUR SECTORS

### GOVERNANCE

- Institutional Strengthening
- Capacity Building
- Skill Development
- Policy Planning
- Vision & Strategy



## GOVERNANCE

CEG supports governments and institutions through capacity building, strategic planning, policy development and institutional strengthening. Our governance services enhance transparency, performance tracking and operational efficiency. We offer tools for regulatory advisory and project evaluation to drive better outcomes. By fostering responsive, data informed, decision making, we enable long term success and resilience.

Our frameworks are adaptable and designed to support effective governance in diverse environments. With an eye on accountability and measurable impact, we help public systems evolve in line with global best practices.



## Projects

- Road Sector Knowledge and Capacity Development; Centre of Excellence in Gujarat, **India**, funded by **World Bank**
- Strengthening Road Asset Management Capacity for ERA, **Ethiopia**, funded by **World Bank**
- Mumbai Metro Line 5 and 9, **India**
- Institutional Strategy & Action Plan for Centres of Excellence, Kerala Road Sector, **India**, funded by **World Bank**
- Enhancing ERA's Institutional Capacity for Performance-Based Contracts, **Ethiopia**, funded by **World Bank**
- Design Review Process & Implementation Support for NHAI, **India**, funded by **World Bank**
- Independent Quality Audit Systems for NHAI, **India**, funded by **World Bank**
- Review and Updating of Road Design Manuals and Standards, **Kenya**, funded by **African Development Bank**
- Review of Design Standards for Roads and Bridges **Mozambique**, funded by **World Bank**
- Mundaragi Harapanahalli Highway, Karnataka, **India**, funded by **World Bank**
- Strategy & Institutional Framework for Research & Standardisation for Ministry of Road and Highway, **India**, funded by **World Bank**
- Master Planning for Land, Water and Air Transport Sector, **Tajikistan**, funded by **Asian Development Bank**



## Services

- Capacity Development
- Capacity Development
- Capacity Building & Skill Development
- Institutional Strengthening, and Strategy Development
- Institutional Strengthening
- Policy Making and Institutional Strengthening
- Policy Making and Institutional Strengthening
- Policy Making
- Policy Making
- Skill Development
- Vision & Strategy
- Technical Assistance



## OUR SECTORS

### DIGITAL SOLUTIONS

- Building Information Management
- GIS
- Asset Management
- Intelligent Transport System
- SCADA



## DIGITAL SOLUTIONS

Digital transformation is not only a trend but also a strategic necessity for any company to remain competitive in an increasingly technological world. CEG harnesses advanced digital solutions like BIM, SCADA, GIS, ITS and Asset Management to power modern infrastructure solutions. With data-driven strategies, we streamline decision making and enhance operational transparency. By embedding digital engineering into infrastructure development, we optimise resources and ensure sustainability. From planning to execution, our digital solutions improve project delivery, foster innovation and transform infrastructure into smart, connected systems that adapt to future demands. Advanced digital solutions allow CEG to ensure compliance of models with international standards, to automate workflows and to reduce errors in architectural, engineering and construction projects.



## Projects

- 132 km Six/Eight Lane Mumbai Nagpur Super Communication Expressway, **India**
- Phase II Chennai Metro, **India**
- Manfoha Qidiyya TSE WTS, **Saudi Arabia**
- Indore and Bhopal Metro, **India**
- Karakalpakstan Road under Central Asia Regional Economic Corridor, **Uzbekistan**, funded by **Asian Development Bank**
- 345 km Six Lane Addis Ababa- Jimma Expressway, **Ethiopia**
- 352 km Six Lane Addis Ababa-Kombolcha-Dessie Expressway, **Ethiopia**
- PBRMC Design for Enhancing ERA's Institutional Capacity, **Ethiopia**
- Urban Development of 22 cities under Rajasthan Urban Infrastructure Development Project (RUIDP) Phase IV, **India**, funded by **Asian Development Bank**
- 330 km Jaipur Kishangarh Jodhpur High Speed Expressway, **India**
- 3700 km Roads Network for PWD, Odisha, **India**, funded by **World Bank**
- 20,000 km of State Highways under RSHDP, Rajasthan, **India**, funded by **World Bank**
- 66,160 km Core Road Network, Rajasthan, **India**, funded by **World Bank**



## Services

- Building Information Modelling (BIM)
- Building Information Modelling
- Building Information Modeling
- Building Information Modeling
- Intelligent Transport System
- Intelligent Transport System
- Intelligent Transport System
- Road Asset Management
- Supervisory Control And Data Acquisition
- GIS and Mapping
- Road Asset Management
- Road Asset Management
- Technical Assistance and Road Asset Management



## OUR SECTORS

### ENVIRONMENT



## ENVIRONMENT

CEG provides robust environmental consulting services, including impact assessments, biodiversity management and rehabilitation planning. We engage with communities to integrate local concerns into sustainable project frameworks. Our work identifies environmental risks early, mitigates negative impacts and ensures regulatory compliance. From climate resilience to habitat preservation, we contribute to greener infrastructure and balanced growth. We emphasise stakeholder engagement and inclusive strategies to support sustainable development goals. Our adaptive, thoughtful approach ensures that every project aligns with ecological values and promotes long term stewardship of natural resources.

## Projects

- Enhancing Private Sector Climate and Clean Air Action, **Nigeria**, funded by **FCDO**
- 130 km Kamala–Dhalkebar–Pathlaiya Highway Section with associated Bridges of Mahendra Highway, **Nepal**, funded by **World Bank**
- 352 km Addis-Kombolicha Expressway, **Ethiopia**
- 345 km Six Lane Addis Ababa–Jimma Expressway, **Ethiopia**
- 845 km Odisha State Roads Project, **India**, funded by **World Bank**
- Kali Mandir Dimna Chowk–Baliguma Highway in Jharkhand, **India**
- Group Housing Project for Kalka Home Developers, **India**
- Mokala Lignite Deposit, Nagaur, Rajasthan, **India**
- Swami Keshvanand Institute of Technology Jaipur, **India**
- Oil & Gas Reserves, Barmer, **India**
- 4 Lane Prayagraj Raibareilly Highway, **India**

## Services

- Climate Resilience
- Environment & Social Impact Assessment and Monitoring Plans
- Environment & Social Impact Assessment and Resettlement Action Plan
- Environment & Social Impact Assessment and Resettlement Action Plan
- Environment & Social Impact Assessment and Resettlement Action Plan
- Environment & Social Impact Assessment and Resettlement Action Plan
- Environment Impact Assessment and Clearance
- Environment Impact Assessment and Clearance
- Environment Impact Assessment and Clearance
- Environment Impact Assessment and Clearance
- Environment & Social Impact Assessment, Resettlement Action Plan and Resilience Advisory





## OUR SECTORS

### GEOTECHNICAL INVESTIGATION



## GEOTECHNICAL INVESTIGATION

CEG operates one of the India's most advanced testing labs, specialising in geotechnical, geophysical and construction material investigations. Our capabilities include NDT, mix design, geotechnical investigations, foundation studies and pavement analysis. These services ensure structural safety and quality from concept to construction. With decades of experience, we provide accurate data that supports sound engineering decisions and durable outcomes. We serve both public and private clients, upholding excellence in every test. Our GeoTech division is key to risk mitigation, design validation and successful infrastructure implementation across varied terrain and scale.

### Projects

- 6 Lane Greenfield Varanasi Ranchi Kolkata Highway in Bihar, **India**
- Kochi Metro Phase II, **India**
- Palwal to Harsankalan Haryana Orbital Rail Corridor, **India**
- Tapi Mines, RD Mines, Zawar Mines, **India**
- HRRL Refinery Projects, **India**
- Paradip Hyderabad Pipeline Project, Odisha, **India**
- Bhatapara, Chilhati & Jamul for Cement & Debottlenecking Plants, **India**
- 1x660 MW Supercritical Unit at ATPS, Chachai, **India**
- Sabarmati Basin Diversion to Jawai Dam (Eastern Rajasthan Canal Project), **India**
- 500MW Bhimsar Dwada ARPRL Park, Jodhpur, **India**
- Dam on Brahmani River & Transmission to Baisapur, **India**
- 1080 MW Barmer Expansion Project, **India**
- Solar Power Plant at Kutch, **India**
- Jaipur Airport, Rajasthan, **India**

### Services

- Geotechnical Investigation
- Geotechnical Investigation
- Geotechnical Investigation
- Geotechnical Investigation
- Geotechnical Investigation
- Geotechnical Investigation
- Geotechnical Investigation and DPR Support
- Geotechnical Investigation and Lab Testing
- Geotechnical Survey
- Soil Investigation
- Soil Investigation
- Geotechnical Investigation





# MULTILATERAL DEVELOPMENT BANKS - FUNDED PROJECTS

We are proud to contribute to infrastructure projects funded by leading Multilateral Development Banks (MDBs). These projects, enable us to deliver sustainable and resilient infrastructure that drives holistic development of overall society. Our role in MDB-funded initiatives reflects our expertise in providing MDB's complied services that meets the rigorous technical, environmental and social standards. Our team has been consistently delivering projects that drive progress while addressing the unique needs of diverse regions and sectors.

 <p><b>Sierra Leone</b></p> <p>Upgrading 25 km of Kailahun-Koindu, Koindu-Guinea-Liberia Border Roads projects, funded by <b>African Development Bank</b></p>  <p>Construction Supervision</p>	 <p><b>India</b></p> <p>508 km Mumbai Ahmedabad High Speed Rail, funded by <b>Japan International Cooperation Agency</b></p>  <p>Project Management Consultancy</p>
 <p><b>Bangladesh</b></p> <p>85 km Khulna Mongla Port Rail Line, funded by <b>Export-Import Bank of India</b></p>  <p>Design</p>	 <p><b>Thailand</b></p> <p>Second Runway &amp; Taxiway Expansion of U-Tapao International Airport in Pattaya Thailand, funded by <b>Asian Infrastructure Investment Bank</b></p>  <p>Project Management Consultancy</p>
 <p><b>Ethiopia</b></p> <p>Output and Performance Road Contract - Lot 2 for Nekempte Bure Highway Section on EPC Mode, funded by <b>World Bank</b></p>  <p>Design</p>	 <p><b>India</b></p> <p>6000 km of Road Network for Andhra Pradesh Rural Road Project, funded by <b>Asian Infrastructure Investment Bank</b></p>  <p>Technical Assistance</p>
 <p><b>Mozambique</b></p> <p>35 km Road Upgradation between Roma and Nambungale Cabo Oelgado Province, funded by <b>African Development Bank</b></p>  <p>Design Review</p>  <p>Construction Supervision</p>	 <p><b>Kenya</b></p> <p>Review and Updating of Road Design Manuals and Standards, Kenya, funded by <b>African Development Bank</b></p>  <p>Policy Making</p>

 <p><b>Ghana</b></p> <p>Design &amp; Review of Selected Roads in CBD of Accra, funded by <b>World Bank</b></p>  <p>Construction Supervision</p>	 <p><b>Liberia</b></p> <p>96 km 4 Lane Barclayville Klowne Sasstown Road Project, funded by <b>Export-Import Bank of India</b></p>  <p>Design</p>  <p>Construction Supervision</p>
 <p><b>Zambia</b></p> <p>391 km Two Lane Road in Laupula Province under Output and Performance Based Contract, funded by <b>World Bank</b></p>  <p>Technical Assistance</p>  <p>Construction Supervision</p>	 <p><b>Kazakhstan</b></p> <p>Road Sector Reform Consultant and Development of new Lifecycle Contracts, funded by <b>World Bank</b></p>  <p>Policy Planning</p>
 <p><b>Uganda</b></p> <p>308 km Kampala Malaba Meter Gauge Railway Line, Uganda, funded by <b>African Development Bank</b></p>  <p>Project Management Consultancy</p>	 <p><b>Tajikistan</b></p> <p>Master Planning for Land, Water, and Air Transport Sector, funded by <b>Asian Development Bank</b></p>  <p>Technical Assistance</p>
 <p><b>Nepal</b></p> <p>130 km Kamala Dhalkebar Pathlaiya Highway, funded by <b>World Bank</b></p>  <p>Environment &amp; Social Impact Assessment</p>	 <p><b>Uzbekistan</b></p> <p>Kungrad to Daut Ata Section of Road under Central Asia Regional Economic Corridor, funded by <b>Asian Development Bank</b></p>  <p>Intelligent Transport System</p>
 <p><b>Tanzania</b></p> <p>Urban Infrastructure Development for Dodoma City, funded by <b>World Bank</b></p>  <p>Construction Supervision</p>	 <p><b>Timor Leste</b></p> <p>24 km Letefoho Gleno Road Section, funded by <b>World Bank</b></p>  <p>Design Review</p>  <p>Construction Supervision</p>



## **PATHWAY TOWARDS PROGRESS**

- Our People
- Our Culture
- Social Responsibility
- Accolades



# A WORKPLACE OF INCLUSIVITY

## Where Every Employee Shines

We are passionate about cultivating an inclusive workplace where diversity is celebrated and every individual is empowered to reach their fullest potential. Through strategic orientation initiatives, a culture of genuine appreciation and a welcoming atmosphere. We ensure equal opportunities and strengthen respect at every level. Here, each voice matters, encouraging collaboration and contributing to a progressive & prospering workforce that drives our shared vision of success.



### Equal Opportunity

Creating avenues for everyone to participate



### True Belonging

Cultivating a space where each individual feels truly at home



### Collaborative Openness

Promoting a culture of openness and willingness to learn



### Just Equity

Upholding justice through equal treatment for all



### Mutual Respect

Embracing diverse backgrounds and experiences



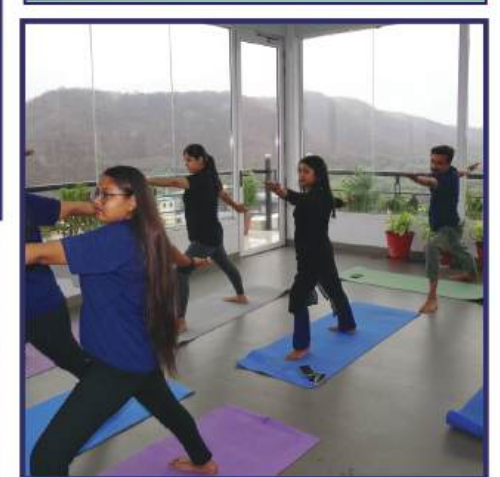
### Empowering Growth

Providing opportunities for growth and development at every level

**"At CEG, every 1 out of 2 permanent employees has stayed with us for more than 10 years and have become our loyal brand ambassadors"**

## Employee Inclusivity

- Meet and Greet
- Orientation Session
- Immersive Trainings
- Pat on the Back
- Work-Life Balance
- Employee Benefits



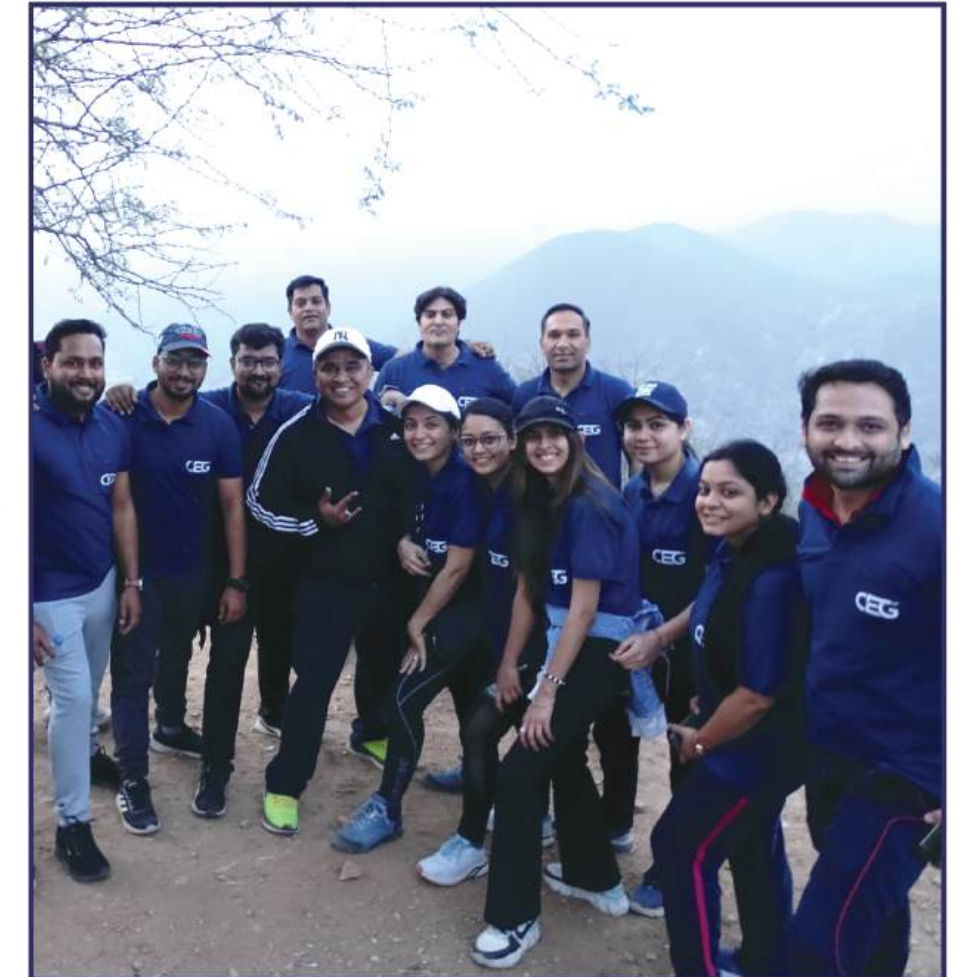


## A PLACE WHERE CULTURE BLOOMS

**“When culture thrives, so does the organisation—  
empowering individuals to create, innovate and lead”**

Our culture is built on innovation, integrity and collaboration. This fostering an environment where creativity and diverse perspectives flourish. CEG believes in a people-first philosophy and a commitment to investing in the growth of its employees, regardless of the role, aligning business objectives with social needs for mutual value creation. We strongly support a healthy company culture by focusing on our team's well-being and happiness. To achieve this, we offer regular health checkups and organise sports tournaments, cultural events and festive celebrations.

By creating a strong sense of belonging, we ensure that our team's happiness translates into higher productivity and work satisfaction.



## Our Cultural Foundations



### Evolving with Purpose

Empowering growth through inclusivity



### Unity Through Values

Fostering collaboration with ethical values



### Giving Back to Society

Enriching lives through impactful initiatives



### Client-Centric Approach

Building trust with client-focused solutions





# SOCIAL RESPONSIBILITY

## Sowing Values, Harvesting Harmony

"A flourishing society is rooted in fundamental social values that shape our actions and are vital in creating a balanced and harmonious community."

At CEG, we recognise that true progress is measured by the lives we impact. Through each project, we go beyond technical precision—whether rehabilitating communities, addressing societal gaps, or advocating for those in need. Driven by a deep sense of purpose, we cherish the privilege of giving back and aspire to build a future rooted in equity and empathy.

## Our Approach



Hands of Expertise, Paths to Progress



Giving Back to the Society



Making a Difference



Bridging the Gap for a Healthier World

## Driving Betterment through Action



## OUR KEY INITIATIVES



### Akansha A Special School for Children with Autism and Differently-abled

Creating a future of inclusion for children with special needs

- Empowering children
- Opportunities for holistic development
- Free access to education
- Catering to children from underprivileged families

### Shri Kushal Guru Jain Charitable Trust

Investing in HER story :  
The Power of Girl Education

- Educating over 500 girls nationwide
- Providing essential financial aid
- Advocating for girls education and empowerment
- Providing assistance based on academic potential



## The Human Side of Engineering – Beyond Workplace

"We take immense pride in our employees, who go the extra mile to create a more equitable society"

Empowered by our culture of giving back, our employees lead inspiring initiatives- from career counselling for young minds to spreading road safety awareness, blood donation drives and community upliftment programmes. They channel their passions into transformative actions and their efforts come together to create a ripple effect of positive change, touching countless lives and shaping a better tomorrow.





## ACCOLADES



**Best Service Provider in the Consultancy Segment by the  
Economic Times Award - 2024**



**FIDIC Asia Pacific Emerging Leaders  
Award - 2025**



**IEI Industry Excellence Award -  
2022**



**IEI Industry Excellence Award -  
2023**



**Dun & Bradstreet - Business Enterprises  
of Tomorrow - 2022**



**Leaders of Tomorrow by Economic  
Times - 2018**



**Rajeev Gandhi National Quality Award -  
2013**



**National Awards for Excellence in  
Consultancy Services - 2007**



**Rajasthan Chamber of Commerce &  
Industry Award - 2007**



## ACHIEVEMENTS



### Certificate of Appreciation by Hon'ble Minister of MoRTH, 2023

This award recognises our valuable guidance and timely support in completing the integrated development of NDA Chowk on the Pune-Satara Section of NH-48 in the state of Maharashtra.

### Certificate of Appreciation from PWD and MSRDC, Govt. of Maharashtra 2023

This award recognises the valuable contribution of CEG towards the Samruddhi Mahamarg Project in Maharashtra.

### CEAI National Award 2021

This award was given to CEG by CEAI for our excellence in Engineering Consultancy Services for the Rajasthan Road Sector Modernisation Project (RRSMP), funded by the World Bank.

### Certificate of Appreciation from Hon'ble Minister of MoRTH 2018

This award is a recognition of CEG's valuable contribution towards the successful completion of the Eastern Peripheral Expressway Project on time and with great efficiency.





Engineering Your Vision

**OUR LEGACY  
IN VISUALS**





**CEG**  
Engineering Your Vision

**OUR LEGACY  
IN VISUALS**





## CORPORATE LOCATIONS



Your Gateway to Engineering Excellence



Connect



Collaborate



Create

Reach out to our global team for inquiries, collaborations, or support. We're here to assist you in engineering your vision.

### Corporate Headquarter

- CEG Tower, B-11 (G) Malviya Industrial Area  
Jaipur-302017, Rajasthan, India
- info@cegindia.com, business@cegindia.com
- +91-141-2751801, +91-141-2751802, +91-141-2751805

### International Subsidiaries

#### UNITED KINGDOM

- 2 Meridian Cross, Ocean Village,  
Southampton, Hampshire,  
SO14 3TJ, United Kingdom
- business@cegworld.com
- +44-7900 480505

#### UAE

- Dubai Silicon Oasis, DDP  
Building A1,  
Dubai, United Arab  
Emirates
- ceg@cegworld.com
- +971 58880 7704

#### MAURITIUS

- Level 3, Ebene Mews,  
Ebene Cybercity, 1721-04
- mauritus@cegworld.com

### Regional Offices - India

#### MUMBAI

- 4th Floor, The Institute of  
Engineers 106, Palm Beach  
Road, Gopinath Panda Patil  
Marg, Sector - 15,  
C.B.D. Belapur Navi Mumbai,  
Maharashtra - 400614, India
- mumbai@cegindia.com
- +91 22 27575110

#### DELHI

- 603, Bhikaji Cama Bhawan,  
Bhikaji Cama Place,  
New Delhi - 110066, India
- cegdeldhi@cegindia.com
- +91 11 25532899, +91 11 25541406

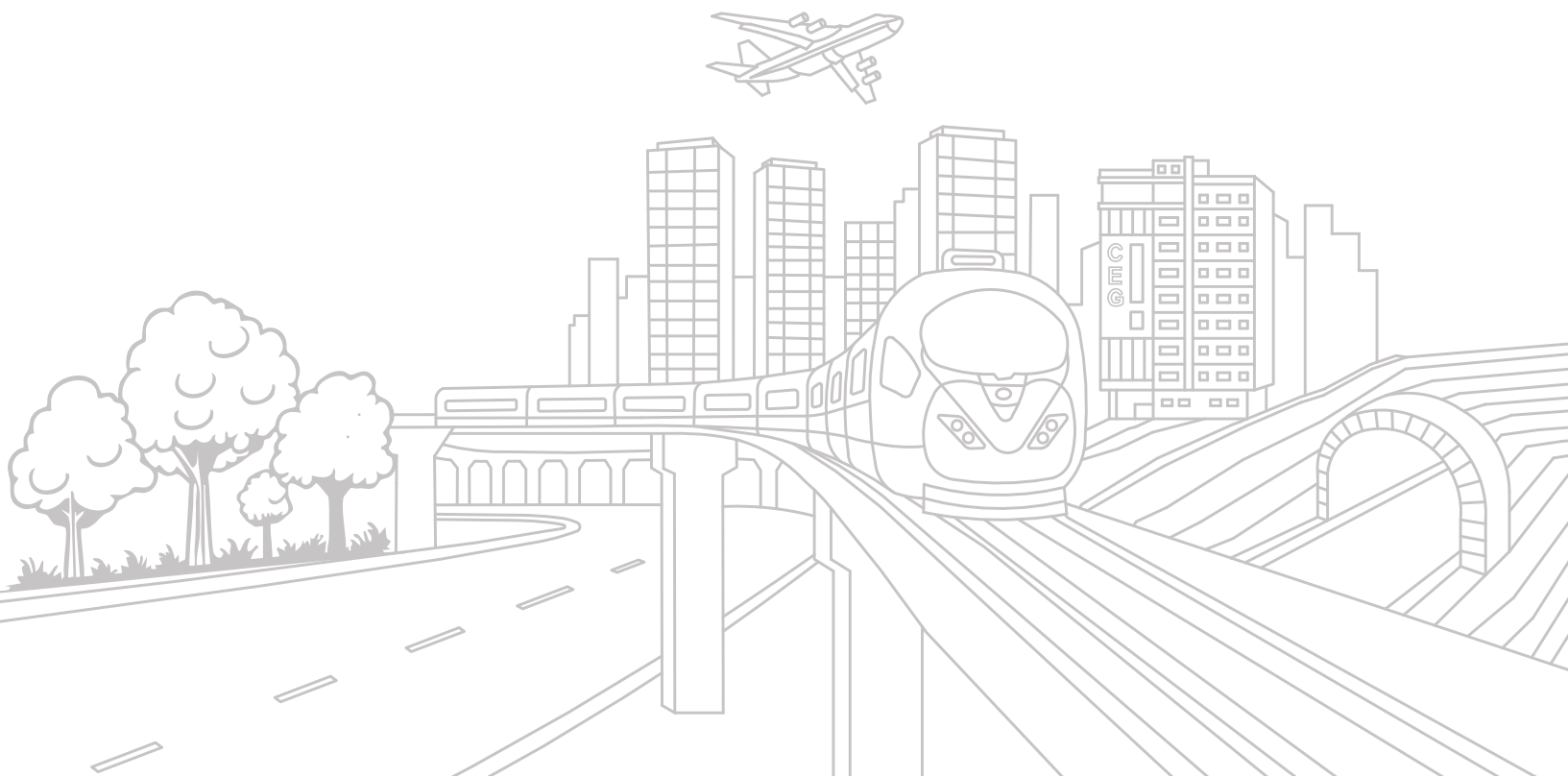
#### GUWAHATI

- House No. 10, Radhanagar,  
Chachal, Kamrup,  
Guwahati, Assam - 781022,  
India
- guwahati@cegindia.com

#### CHENNAI

- BI- 1st Floor. A- Block, Parsn  
Paradise 109, Gn Chetty Road,  
T.Nagar, Chennai - 600017, India
- chennai@cegindia.com
- +91 97733 83672





## CONSULTING ENGINEERS GROUP LTD.

HO: CEG Tower, B-11 (G), Malviya Industrial Area,  
Jaipur - 302017, Rajasthan, India

Phone: +91 - 141- 2751801 - 805



 Website



 LinkedIn



 E-Brochure